



## Material Tested

Elder Berry

For: Lost Empire Herbs

Lot #: BELDR03APR24

Botanical: *Sambucus nigra* L. [Viburnaceae], fruit juice

Sample ID: 24099ECF\_1, Plate #: 226423

## What We've Tested

We tested this sample by High Performance Thin Layer Chromatography. HPTLC is a technique for separating phytochemical compounds within plant material, as well as other chemical compounds, to verify its identity and/or purity.



## Conclusion



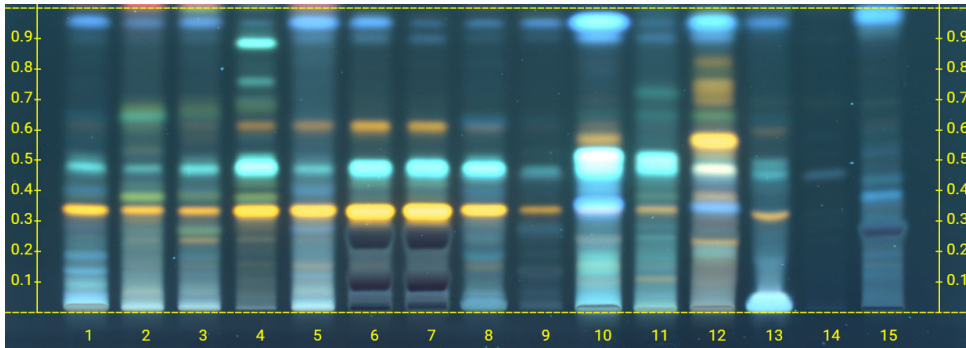
*Sambucus nigra*, fruit juice, is present

We tested the sample against known authenticated reference materials to affirm identity, when applicable.



## Test Details

High Performance Thin-Layer Chromatography



We tested the sample against different parts of the same plant when possible and as needed.

Lane 7 shows the sample being tested.

Lanes 5 & 6 show the reference material used to compare with the sample.

We tested this sample against known adulterants when applicable.

