

Material Tested

Blue Vervain Tincture
For: Lost Empire Herbs
Lot #: BV220E
Botanical: *Verbena hastata* L. [Verbenaceae], Tops, Flowers, Leaves
Sample ID: 23079WUH_1, Plate #: 196466

What We've Tested

We tested this sample by High Performance Thin Layer Chromatography. HPTLC is a technique for separating phytochemical compounds within plant material, as well as other chemical compounds, to verify its identity and/or purity.

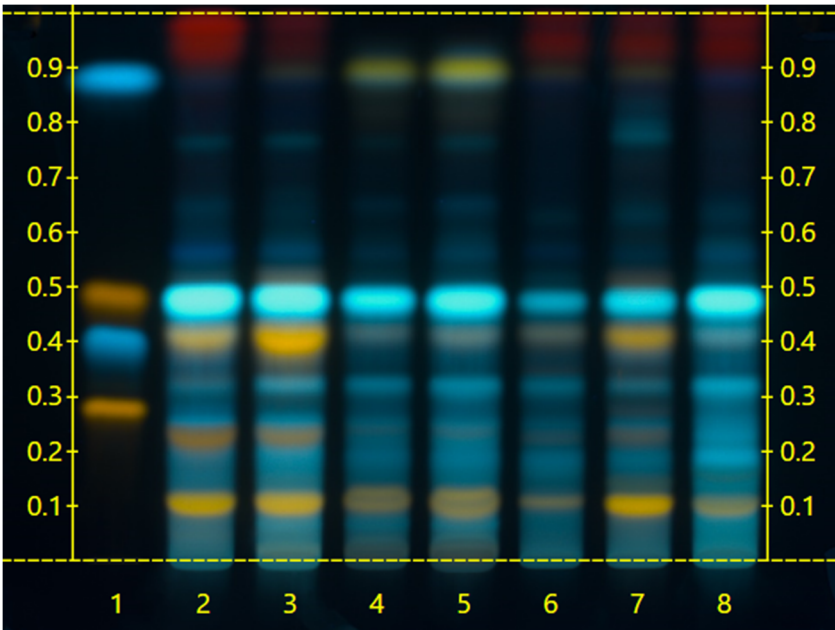
Conclusion



This sample conforms to *Verbena hastata*, Tops, Flowers, Leaves

Test Details

High Performance Thin-Layer Chromatography



We tested the sample against known authenticated reference materials to affirm identity, when applicable.

We tested the sample against different parts of the same plant when possible and as needed.

We tested this sample against known adulterants when applicable.

Lanes 4 & 5 show the sample being tested.
Lanes 2 & 3 show the reference material used to compare with the sample.

