

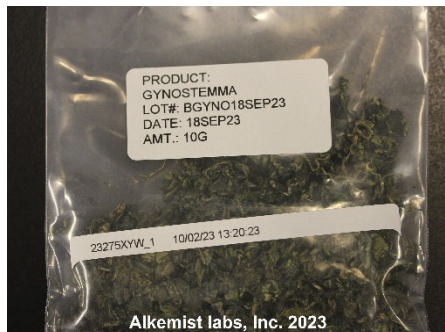
Certificate Issued To:
Lost Empire Herbs
8301 NW 101st Ter.
Kansas City, MO 64153-2321
United States



Work performed at:
Alkemist Labs
12661 Hoover Street
Garden Grove, CA 92841
714-754-HERB (4372)
sales@alkemist.com

Certificate of Analysis: Gynostemma (BGYNO18SEP23)
Microscopy with Digital Photo-Documentation

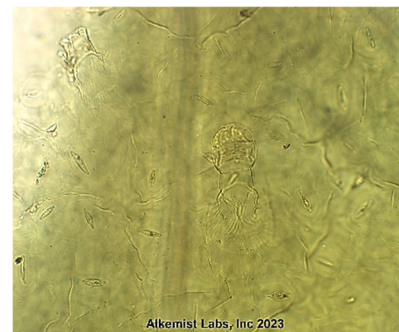
1



2



3



Company Name: Lost Empire Herbs
Title: Gynostemma
Plant Part: Leaf
Sample Received: 10/2/2023
Sample Description: Clear Reclosable Plastic Bag
Form of Botanical: cut and sifted
Appearance: (1) green cuts
Lot : BGYNO18SEP23
Sample : 23275XYW_1
Latin Name: Gynostemma pentaphyllum (Thumb.) Makino [Cucurbitaceae]
Reference Sample : FK14902SWH; FK09113AP1 Gynostemma pentaphyllum (Thumb.) Makino [Cucurbitaceae] authenticated by macroscopic, microscopic &/or TLC studies according to the reference sources cited below; held at Alkemist Labs, Garden Grove, CA.
Analyst: E. Sudberg, I. French, P. Hoang
Magnification: (2) 400X
Chemical Reagents: (2) acidified chloral hydrate glycerol solution
Sample Findings: (2) non-glandular hair with linear striations
Magnification: (3) 400X
Chemical Reagents: (3) acidified chloral hydrate glycerol solution
Sample Findings: (3) glandular hair with 4-celled elliptical head and 1 to 2-celled stalk
Reference Source: Hong Kong Chinese Materia Medica Standards (HKCMMS); Chinese Medicinal Identification An Illustrated Approach, Zhao and Chen, 2014; Internal Reference Sample MIC-SOP-54-04, MIC-SOP-54-05, MIC-SOP-54-06, MIC-SOP-510-07

Comments & Conclusions: This sample has characteristics of Gynostemma pentaphyllum (Thumb.) Makino [Cucurbitaceae] aerial parts based on comparison with authenticated reference samples and the characteristics described in the references cited above. The characteristic cellular structures identified in this sample are the non-glandular hair with linear striations seen in micrograph (2) above. In micrograph (3) we see the glandular hair with 4-celled elliptical head and 1 to 2-celled stalk. **This test sample, Gynostemma (BGYNO18SEP23), has characteristics of Gynostemma pentaphyllum (Thumb.) Makino [Cucurbitaceae] aerial parts.**

NOTE: The presence of soluble excipients and other plant species material was not detected in this test sample.

Analyzed by: Iris French
Examined, Reviewed & Authorized by: Élan M Sudberg, CEO

Report Date: 10/5/2023



This report applies to the sample investigated and is not necessarily indicative of the quality or condition of apparently identical or similar products. This report is for the exclusive use of the party who requested the report and not for public dissemination or use by third parties, including for promotional purposes, without the prior written permission of Alkemist Labs, Inc. This report provides technical results for a specific sample and the report shall not be altered, modified, supplemented or abstracted in any manner. Any violation of these conditions renders the report and its results void. © 2023 Alkemist Labs, Inc. All Rights Reserved.