



## Material Tested

Gynostemma

For: Lost Empire Herbs

Lot #: BGYNO04NOV22

Botanical: *Gynostemma pentaphyllum* (Thumb.) Makino  
[Cucurbitaceae], Leaf

Sample ID: 22325BCA\_1, Plate #: 189705

## What We've Tested

We tested this sample by High Performance Thin Layer Chromatography. HPTLC is a technique for separating phytochemical compounds within plant material, as well as other chemical compounds, to verify its identity and/or purity.



## Conclusion



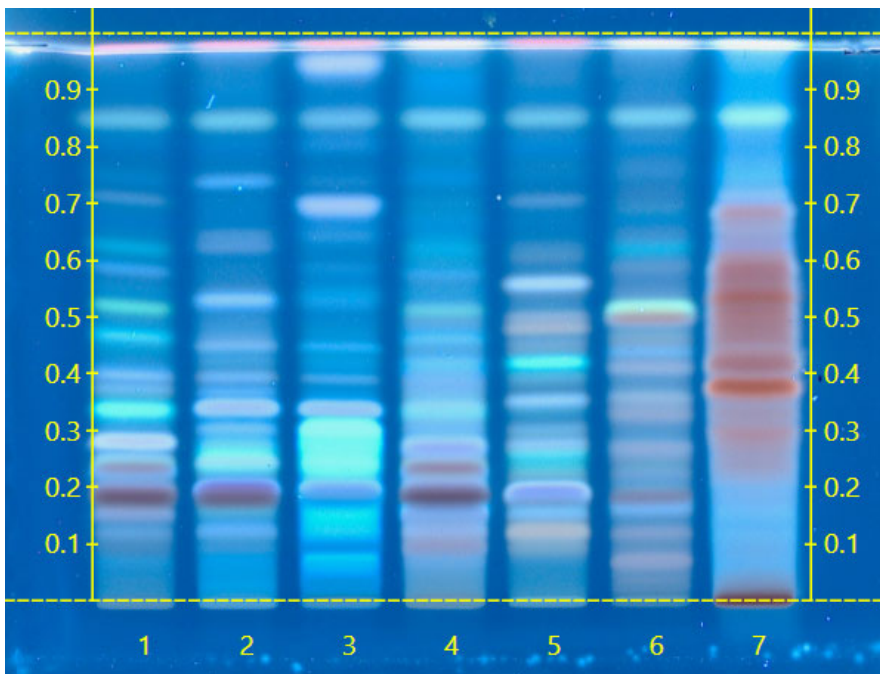
This sample conforms to *Gynostemma sp.*, Leaf

We tested the sample against known authenticated reference materials to affirm identity, when applicable.



## Test Details

High Performance Thin-Layer Chromatography



Lane 3 shows the sample being tested.

Lane 7 shows the reference material used to compare with the sample.

We tested the sample against different parts of the same plant when possible and as needed.

We tested this sample against known adulterants when applicable.

