



Material Tested

Beet

For: Lost Empire Herbs

Lot #: BBET09MAY22

Botanical: *Beta vulgaris* L. [Chenopodiaceae], Root

Sample ID: 22160NCW_1, Plate #: 178157

What We've Tested

We tested this sample by High Performance Thin Layer Chromatography. HPTLC is a technique for separating phytochemical compounds within plant material, as well as other chemical compounds, to verify its identity and/or purity.



Conclusion



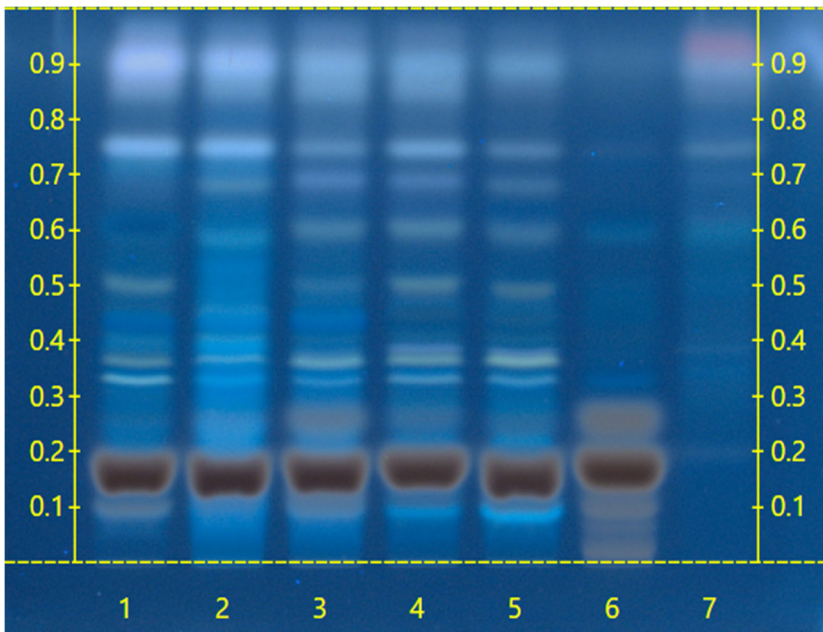
This sample conforms to *Beta vulgaris*, Root

We tested the sample against known authenticated reference materials to affirm identity, when applicable.



Test Details

High Performance Thin-Layer Chromatography



We tested the sample against different parts of the same plant when possible and as needed.

We tested this sample against known adulterants when applicable.

Lane 5 shows the sample being tested.

Lanes 1 & 2 show the reference material used to compare with the sample.

