



Material Tested

Maca

For: Lost Empire Herbs

Lot #: BMACA26MAR24

Botanical: *Lepidium meyenii* Walp. [Brassicaceae], root

Sample ID: 24092XCB_1, Plate #: 225608

What We've Tested

We tested this sample by High Performance Thin Layer Chromatography. HPTLC is a technique for separating phytochemical compounds within plant material, as well as other chemical compounds, to verify its identity and/or purity.



Conclusion



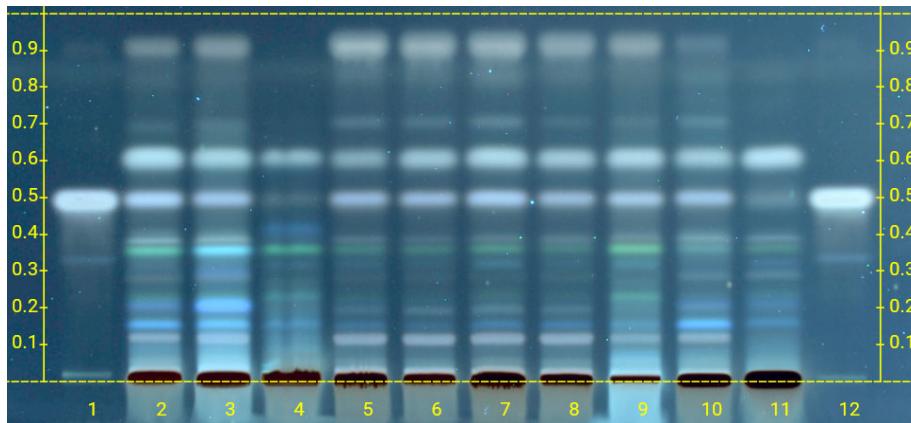
Lepidium meyenii, root, is present

We tested the sample against known authenticated reference materials to affirm identity, when applicable.



Test Details

High Performance Thin-Layer Chromatography



We tested the sample against different parts of the same plant when possible and as needed.

Lane 8 shows the sample being tested.

Lanes 2, 3, 10 & 11 show the reference material used to compare with the sample.

We tested this sample against known adulterants when applicable.

