



## Material Tested

Maca

For: Lost Empire Herbs

Lot #: BMACA16AUG22

Botanical: *Lepidium meyenii* Walp. [Brassicaceae], Root

Sample ID: 22249VBD\_1, Plate #: 184192

## What We've Tested

We tested this sample by High Performance Thin Layer Chromatography. HPTLC is a technique for separating phytochemical compounds within plant material, as well as other chemical compounds, to verify its identity and/or purity.



## Conclusion



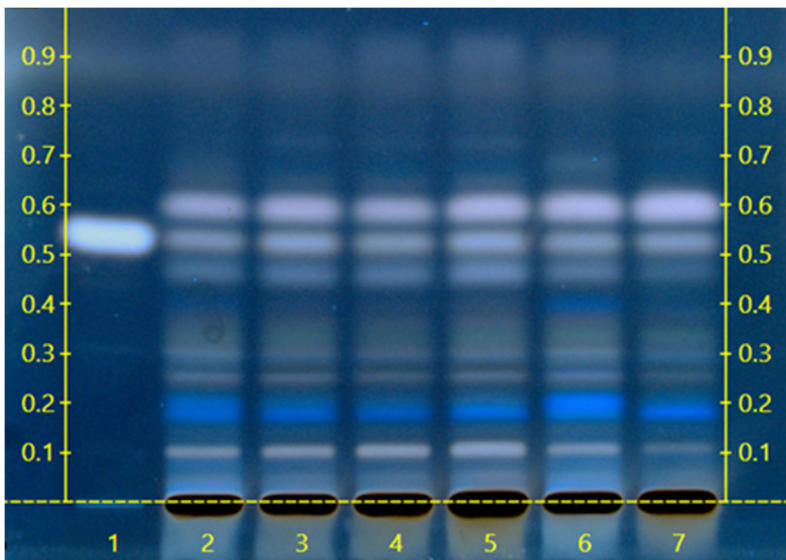
This sample conforms to *Lepidium meyenii*, Root

We tested the sample against known authenticated reference materials to affirm identity, when applicable.



## Test Details

High Performance Thin-Layer Chromatography



We tested the sample against different parts of the same plant when possible and as needed.

We tested this sample against known adulterants when applicable.

Lanes 4 & 5 show the sample being tested.

Lanes 2, 3, 6 & 7 show the reference material used to compare with the sample.

