



Material Tested

Pine Pollen

For: Lost Empire Herbs

Lot #: BPP27MAR22

Botanical: *Pinus sp.*, Pollen

Sample ID: 22175HBE_1, Plate #: 179150

What We've Tested

We tested this sample by High Performance Thin Layer Chromatography. HPTLC is a technique for separating phytochemical compounds within plant material, as well as other chemical compounds, to verify its identity and/or purity.



Conclusion



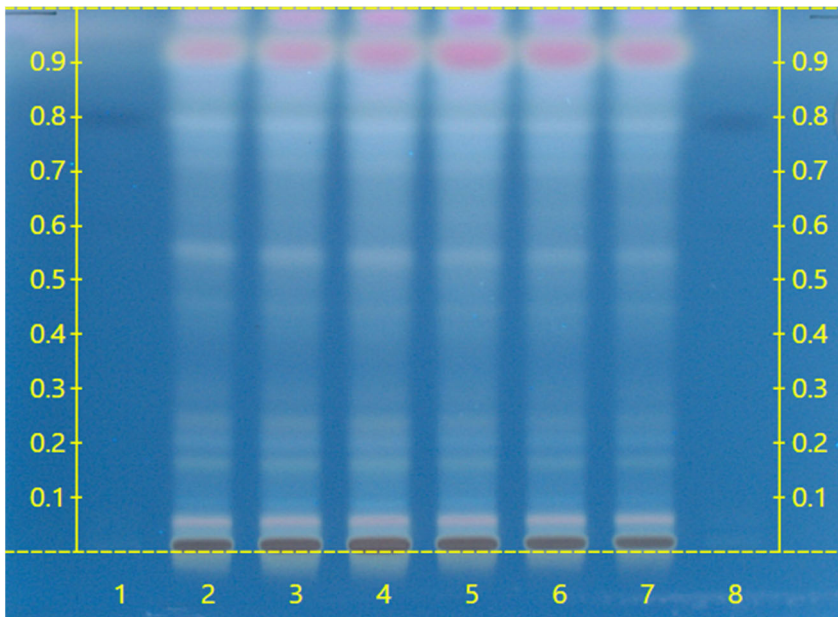
This sample conforms to *Pinus sp.*, Pollen

We tested the sample against known authenticated reference materials to affirm identity, when applicable.



Test Details

High Performance Thin-Layer Chromatography



We tested the sample against different parts of the same plant when possible and as needed.

We tested this sample against known adulterants when applicable.

Lanes 2, 3 & 4 show the sample being tested.

Lanes 5, 6 & 7 show the reference material used to compare with the sample.

