



## Material Tested

Pine Pollen

For: Lost Empire Herbs

Lot #: BPP13JUN23

Botanical: *Pinus sp.*, Pollen

Sample ID: 23219FQJ\_1, Plate #: 206353



## Conclusion

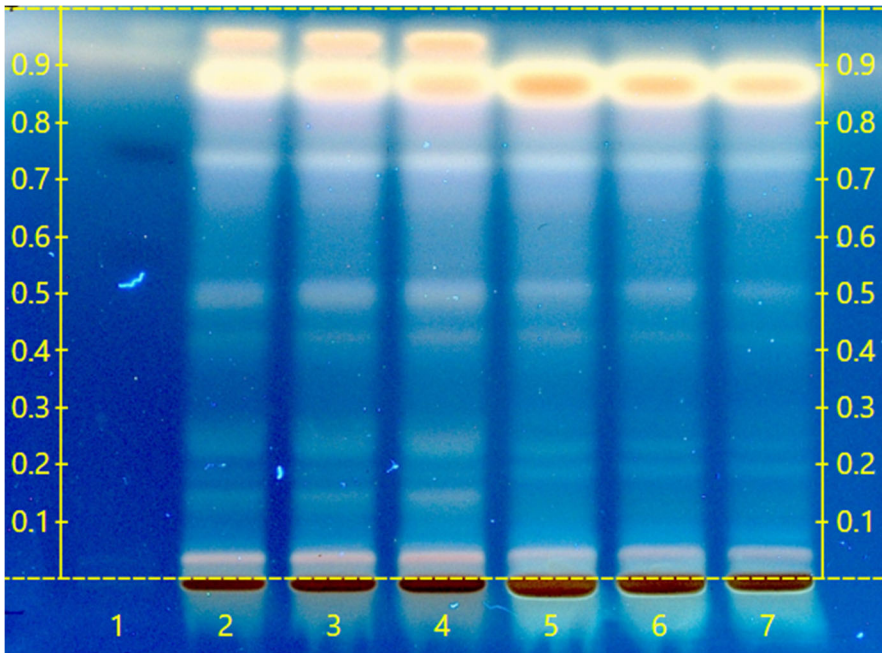


*Pinus sp.*, Pollen, is present.



## Test Details

High Performance Thin-Layer Chromatography



Lanes 2, 3 & 4 show the sample being tested.

Lanes 5, 6 & 7 show the reference material used to compare with the sample.

## What We've Tested

We tested this sample by High Performance Thin Layer Chromatography. HPTLC is a technique for separating phytochemical compounds within plant material, as well as other chemical compounds, to verify its identity and/or purity.

We tested the sample against known authenticated reference materials to affirm identity, when applicable.

We tested the sample against different parts of the same plant when possible and as needed.

We tested this sample against known adulterants when applicable.

