

Material Tested

Cistanche

For: Lost Empire Herbs

Lot #: BPCIST04AUG22

Botanical: *Cistanche tubulosa* (Schenk) Wight, Succulent Stem

Sample ID: 22249VDW_1, Plate #: 184439

What We've Tested

We tested this sample by High Performance Thin Layer Chromatography. HPTLC is a technique for separating phytochemical compounds within plant material, as well as other chemical compounds, to verify its identity and/or purity.

Conclusion

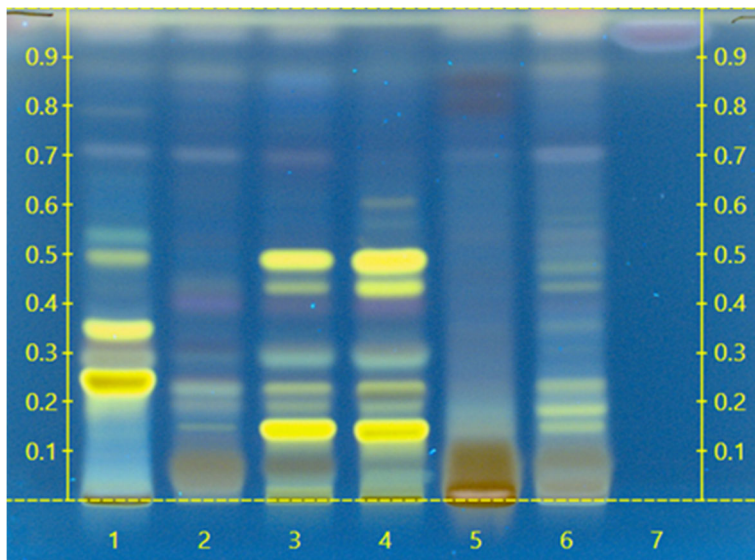


This sample conforms to *Cistanche sp.*, Succulent Stem

We tested the sample against known authenticated reference materials to affirm identity, when applicable.

Test Details

High Performance Thin-Layer Chromatography



We tested the sample against different parts of the same plant when possible and as needed.

We tested this sample against known adulterants when applicable.

Lane 4 shows the sample being tested.

Lanes 1, 2, 3, 5 & 6 show the reference material used to compare with the sample.

