

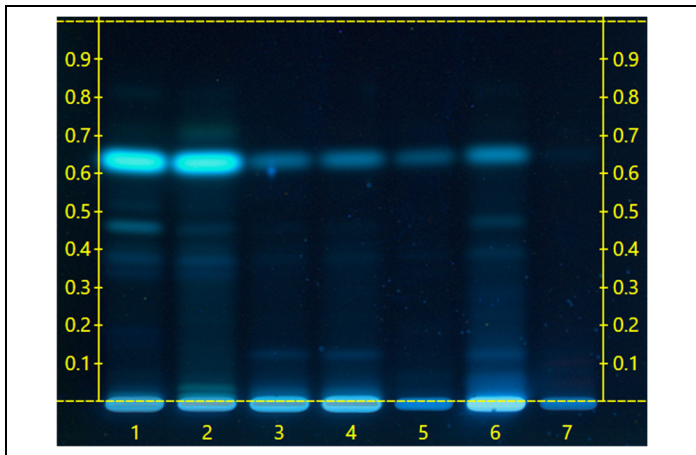
Certificate Issued To:
Lost Empire Herbs
8301 NW 101st Ter.
Kansas City, MO 64153-2321
United States



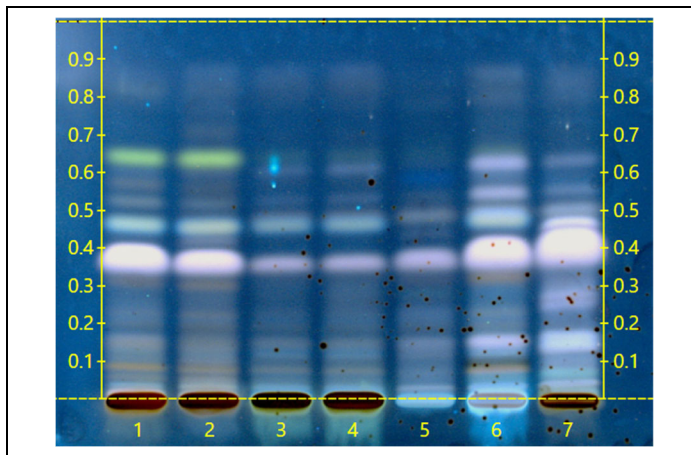
Work performed at:
Alkemist Labs
12661 Hoover Street
Garden Grove, CA 92841
714-754-HERB (4372)
714-668-9972 (FAX)
Sales@Alkemist.com
www.Alkemist.com

Certificate of Analysis: Cordyceps (BNCORD27JUN23)
High Performance Thin-Layer Chromatography with Photo-Documentation

1



2



Company Name: Lost Empire Herbs
Title: Cordyceps
Plant Part: fruiting body
Sample Received: 08/07/23
Sample Packaging: Clear Reclosable Plastic Bag
Form of Botanical: powdered extract
Appearance: tan powder
Lot Number: (BNCORD27JUN23) → Lanes 3(8μl), 4(10μl)
Sample: 23219UFR_1
Latin Name: *Cordyceps militaris* (L.) Link [Clavicipitaceae]
Reference Sample: Lane 1(8μl) (22130LEC), Lane 2(8μl) (ASL10213NAMX1) *Cordyceps militaris* (fruiting body); Lane 5(8μl) (ASL19317FPM1) *Cordyceps militaris* (mycelia); Lane 6(8μl) (UH21912CSB1) *Paecilomyces hepiali* (mycelia); Lane 7(8μl) (ES18709CRB2) *Avena sativa* (grain); held at Alkemist Labs, Garden Grove, CA.

Analyst: A.Foults, D.Robinson, J.Mares, K.Chopra, K.Montoya, K.Tran, L.Tang, M.Fox, N.Alvarez, N.Hoang, N.Afendikova, N.Waldstreicher, P.Hoang, S.Kabbaj, S.Sudberg 206635

Sample Preparation: 0.3g+3mL 70% grain Ethanol, sonicate/heat at 50° C for 30 min.
Stationary Phase: Silica gel 60, HPTLC plates
Mobile Phase: toluene: ethyl formate: Formic Acid [5/5/0.2]
Detection: (1) UV 366 nm
(2) 10% Sulfuric, 100°C, 2min, 366nm (Reich, E., 2007)

Reference Source: BTM-715-0089
IDT-SOP-72-01

Comments & Conclusions: Lanes 3, 4 are the test sample Cordyceps (BNCORD27JUN23) Lanes 1, 2, 5, 6, 7 are the reference samples used for comparison. This test sample, Cordyceps (BNCORD27JUN23), has characteristics of the chromatographic profile of *Cordyceps militaris* reference samples used above. **This test sample Cordyceps (BNCORD27JUN23) indicates the presence of *Cordyceps militaris* fruiting body.**

NOTE: The above conclusion may be a function of the natural variance found in botanicals &/or the extraction process used to create specific extracts. The growing and drying conditions, age, seasonal variations, geographic location, extraction solvents, etc. all play a role in the phytochemical fingerprint of botanicals as well as their extracts; hence, chromatographic variations are expected.

Examined, Reviewed & Authorized by: Khanh N Tran, HPTLC, R&D Supervisor, Alkemist Labs

Report Date: 08/14/23

ISO/IEC 17025



Note: Any unidentified lanes in the above chromatograms are confidential and may represent internal studies or other test samples not related to BNCORD27JUN23. This report applies to the sample investigated and is not necessarily indicative of the quality or condition of apparently identical or similar products. This report is for the exclusive use of the party who requested the report and not for public dissemination or use by third parties, including for promotional purposes, without the prior written permission of Alkemist Labs, Inc. This report provides technical results for a specific sample and the report shall not be altered, modified, supplemented or abstracted in any manner. Any violation of these conditions renders the report and its results void. © 2023 Alkemist Labs, Inc. All Rights Reserved