



Material Tested

Ziziphus

For: Lost Empire Herbs

Lot #: BZIZI1MAR22

Botanical: Ziziphus jujuba Mill. var. spinosa (Bunge) Hu ex H.F. Chow
[Rhamnaceae], Seed

Sample ID: 22066JVV_1, Plate #: 172505

What We've Tested

We tested this sample by High Performance Thin Layer Chromatography. HPTLC is a technique for separating phytochemical compounds within plant material, as well as other chemical compounds, to verify its identity and/or purity.



Conclusion



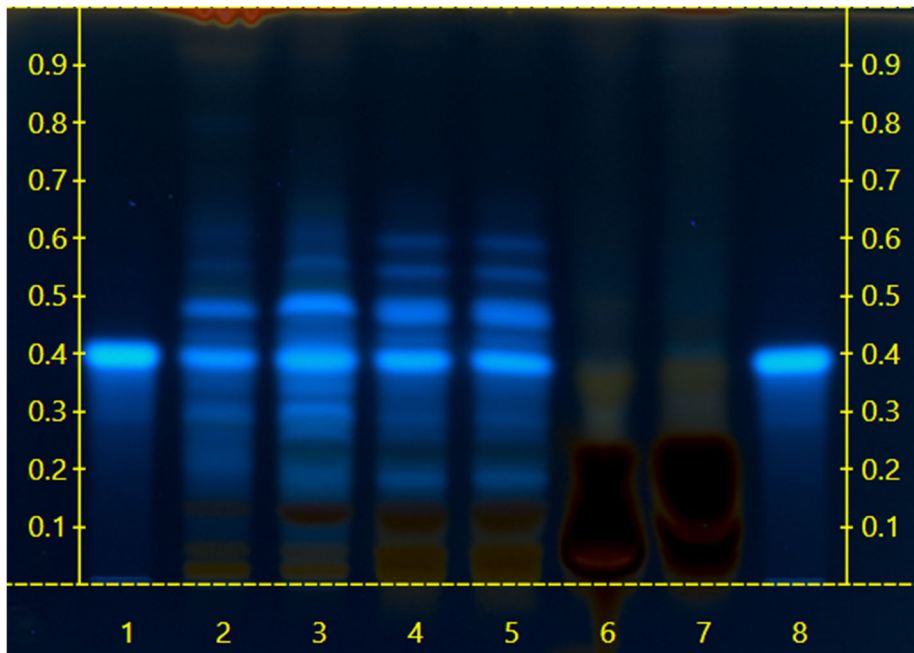
This sample conforms to Ziziphus jujuba Mill. var. spinosa (Bunge) Hu ex H.F. Chow [Rhamnaceae] Seed

We tested the sample against known authenticated reference materials to affirm identity, when applicable.



Test Details

High Performance Thin-Layer Chromatography



We tested the sample against different parts of the same plant when possible and as needed.

We tested this sample against known adulterants when applicable.

Lanes 4 & 5 show the sample being tested.

Lanes 2 & 3 show the reference material used to compare with the sample.

