



## Material Tested

Ziziphus

For: Lost Empire Herbs

Lot #: BZIZI19DEC22

Botanical: Ziziphus jujuba Mill. var. spinosa (Bunge) Hu ex H.F. Chow  
[Rhamnaceae], seed

Sample ID: 23006NTT\_1, Plate #: 191744

## What We've Tested

*We tested this sample by High Performance Thin Layer Chromatography. HPTLC is a technique for separating phytochemical compounds within plant material, as well as other chemical compounds, to verify its identity and/or purity.*



## Conclusion



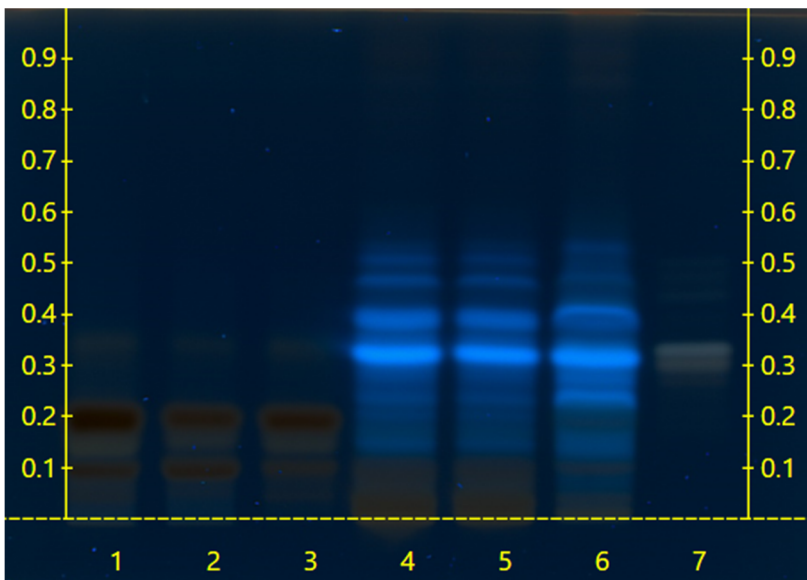
This sample conforms to Ziziphus jujuba Mill. var. spinosa (Bunge) Hu ex H.F. Chow [Rhamnaceae] seed

*We tested the sample against known authenticated reference materials to affirm identity, when applicable.*



## Test Details

High Performance Thin-Layer Chromatography



Lanes 4 & 5 show the sample being tested.

Lane 6 shows the reference material used to compare with the sample.

*We tested the sample against different parts of the same plant when possible and as needed.*

*We tested this sample against known adulterants when applicable.*

