



Material Tested

Ashwagandha Tincture

For: Lost Empire Herbs

Lot #: A220D

Botanical: *Withania somnifera* (L.) Dunal [Solanaceae], Root & <1%
Leaf

Sample ID: 22220HQS_1, Plate #: 181666

What We've Tested

We tested this sample by High Performance Thin Layer Chromatography. HPTLC is a technique for separating phytochemical compounds within plant material, as well as other chemical compounds, to verify its identity and/or purity.



Conclusion



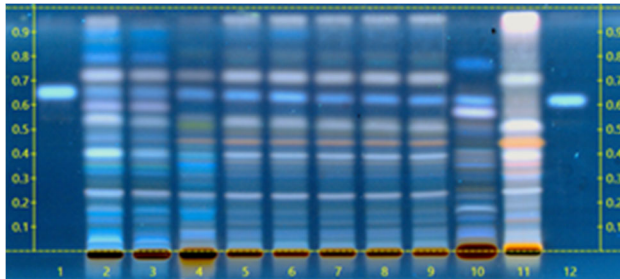
This sample conforms to *Withania somnifera*, Root & <1%
Leaf

We tested the sample against known authenticated reference materials to affirm identity, when applicable.



Test Details

High Performance Thin-Layer Chromatography



We tested the sample against different parts of the same plant when possible and as needed.

We tested this sample against known adulterants when applicable.

Lane 10 shows the sample being tested.

Lanes 2, 3 & 4 show the reference material used to compare with the sample.

