



## Material Tested

Schizandra

For: Lost Empire Herbs

Lot #: BSCHIZ04NOV22

Botanical: *Schisandra chinensis* (Turcz.) Baill. [Schisandraceae], Fruit

Sample ID: 22325FFY\_1, Plate #: 189510

## What We've Tested

We tested this sample by High Performance Thin Layer Chromatography. HPTLC is a technique for separating phytochemical compounds within plant material, as well as other chemical compounds, to verify its identity and/or purity.



## Conclusion



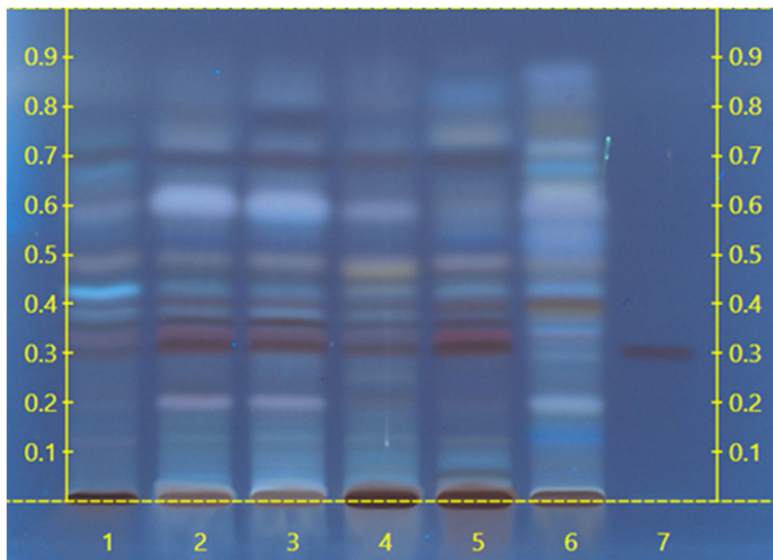
This sample conforms to *Schisandra chinensis*, Fruit

We tested the sample against known authenticated reference materials to affirm identity, when applicable.



## Test Details

High Performance Thin-Layer Chromatography



We tested the sample against different parts of the same plant when possible and as needed.

We tested this sample against known adulterants when applicable.

Lane 5 shows the sample being tested.

Lanes 2 & 3 show the reference material used to compare with the sample.

