



## Material Tested

Rhodiola

For: Lost Empire Herbs

Lot #: BNRHOD19DEC22

Botanical: *Rhodiola rosea* L. [Crassulaceae], root

Sample ID: 23006XVW\_1, Plate #: 191832

## What We've Tested

We tested this sample by High Performance Thin Layer Chromatography. HPTLC is a technique for separating phytochemical compounds within plant material, as well as other chemical compounds, to verify its identity and/or purity.



## Conclusion



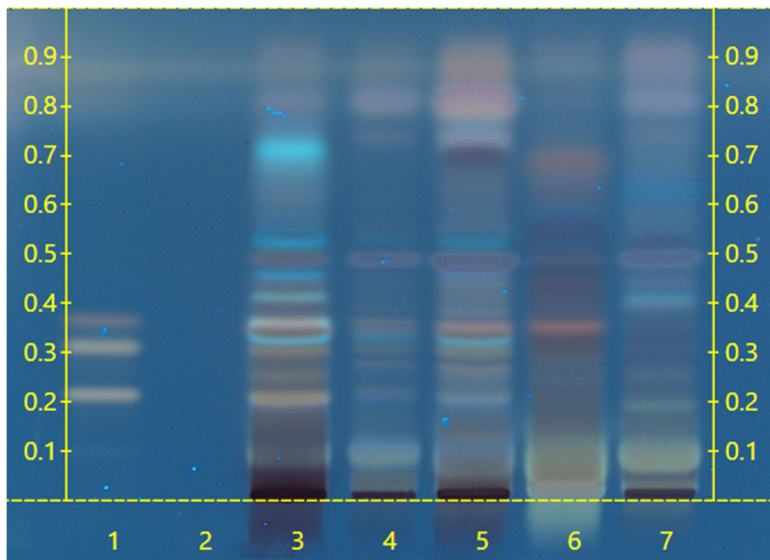
This sample conforms to *Rhodiola rosea*, root

We tested the sample against known authenticated reference materials to affirm identity, when applicable.



## Test Details

High Performance Thin-Layer Chromatography



We tested the sample against different parts of the same plant when possible and as needed.

We tested this sample against known adulterants when applicable.

Lanes 4 & 5 show the sample being tested.

Lane 3 shows the reference material used to compare with the sample.

