



## Material Tested

Rhodiola

For: Lost Empire Herbs

Lot #: BNRHOD17JUL23

Botanical: *Rhodiola rosea* L. [Crassulaceae], Root

Sample ID: 23219BUY\_1, Plate #: 206284

## What We've Tested

*We tested this sample by High Performance Thin Layer Chromatography. HPTLC is a technique for separating phytochemical compounds within plant material, as well as other chemical compounds, to verify its identity and/or purity.*



## Conclusion



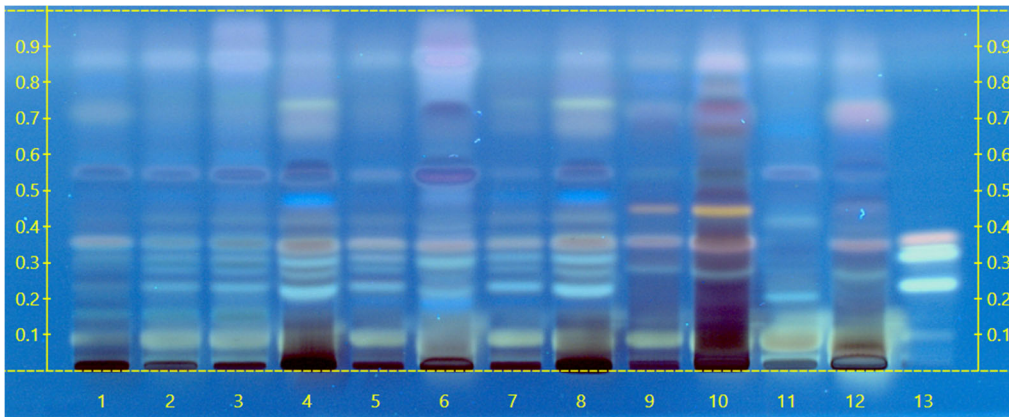
*Rhodiola rosea*, Root, is present

*We tested the sample against known authenticated reference materials to affirm identity, when applicable.*



## Test Details

High Performance Thin-Layer Chromatography



*We tested the sample against different parts of the same plant when possible and as needed.*

Lane 6 shows the sample being tested.

Lanes 1, 2 & 3 show the reference material used to compare with the sample.

*We tested this sample against known adulterants when applicable.*

