



## Material Tested

He Shou Wu

For: Lost Empire Herbs

Lot #: BHSW19JAN23

Botanical: *Polygonum multiflorum* Thunb. [Polygonaceae], root

Sample ID: 23052XWH\_1, Plate #: 195040

## What We've Tested

We tested this sample by High Performance Thin Layer Chromatography. HPTLC is a technique for separating phytochemical compounds within plant material, as well as other chemical compounds, to verify its identity and/or purity.



## Conclusion



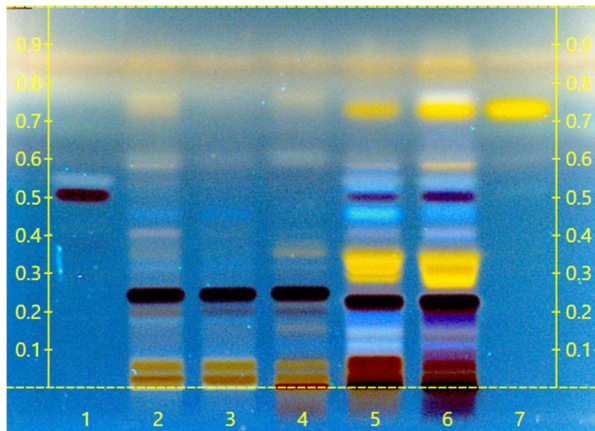
This sample conforms to *Polygonum multiflorum*, root

We tested the sample against known authenticated reference materials to affirm identity, when applicable.



## Test Details

High Performance Thin-Layer Chromatography



We tested the sample against different parts of the same plant when possible and as needed.

We tested this sample against known adulterants when applicable.

Lane 4 shows the sample being tested.

Lanes 2 & 3 show the reference material used to compare with the sample.

