



Material Tested

Goji

For: Lost Empire Herbs

Lot #: BGOJI16AUG22

Botanical: *Lycium sp.* 'Goji' L. [Solanaceae], Fruit, Seed

Sample ID: 22249RUY_1, Plate #: 184194

What We've Tested

We tested this sample by High Performance Thin Layer Chromatography. HPTLC is a technique for separating phytochemical compounds within plant material, as well as other chemical compounds, to verify its identity and/or purity.



Conclusion



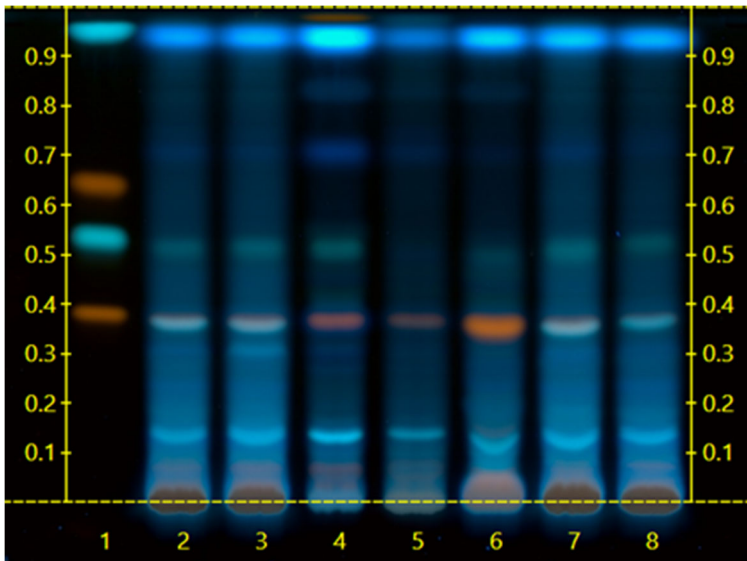
This sample conforms to *Lycium sp.* 'Goji', Fruit, Seed

We tested the sample against known authenticated reference materials to affirm identity, when applicable.



Test Details

High Performance Thin-Layer Chromatography



We tested the sample against different parts of the same plant when possible and as needed.

We tested this sample against known adulterants when applicable.

Lane 6 shows the sample being tested.

Lanes 2, 3, 7 & 8 show the reference material used to compare with the sample.

