



## Material Tested

Goji

For: Lost Empire Herbs

Lot #: BGOJI02FEB23

Botanical: *Lycium sp.* 'Goji' L. [Solanaceae], Fruit, seed

Sample ID: 23052LYK\_1, Plate #: 194692

## What We've Tested

We tested this sample by High Performance Thin Layer Chromatography. HPTLC is a technique for separating phytochemical compounds within plant material, as well as other chemical compounds, to verify its identity and/or purity.



## Conclusion



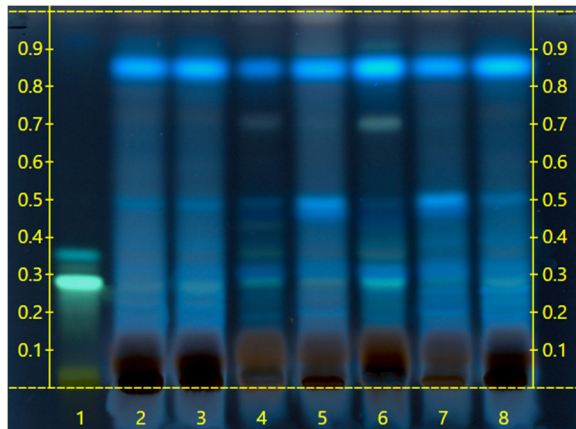
This sample conforms to *Lycium sp.* 'Goji', Fruit, seed

We tested the sample against known authenticated reference materials to affirm identity, when applicable.



## Test Details

High Performance Thin-Layer Chromatography



We tested the sample against different parts of the same plant when possible and as needed.

Lane 4 shows the sample being tested.

Lanes 2, 3 & 8 show the reference material used to compare with the sample.

We tested this sample against known adulterants when applicable.

