



Material Tested

Chaga

For: Lost Empire Herbs

Lot #: BCHAG03APR23

Botanical: *Inonotus obliquus* (Pers.: Fr.) Pilat [Hymenochaetaceae],

Sterile Conk, Canker

Sample ID: 23121MSM_1, Plate #: 199469

What We've Tested

We tested this sample by High Performance Thin Layer Chromatography. HPTLC is a technique for separating phytochemical compounds within plant material, as well as other chemical compounds, to verify its identity and/or purity.



Conclusion

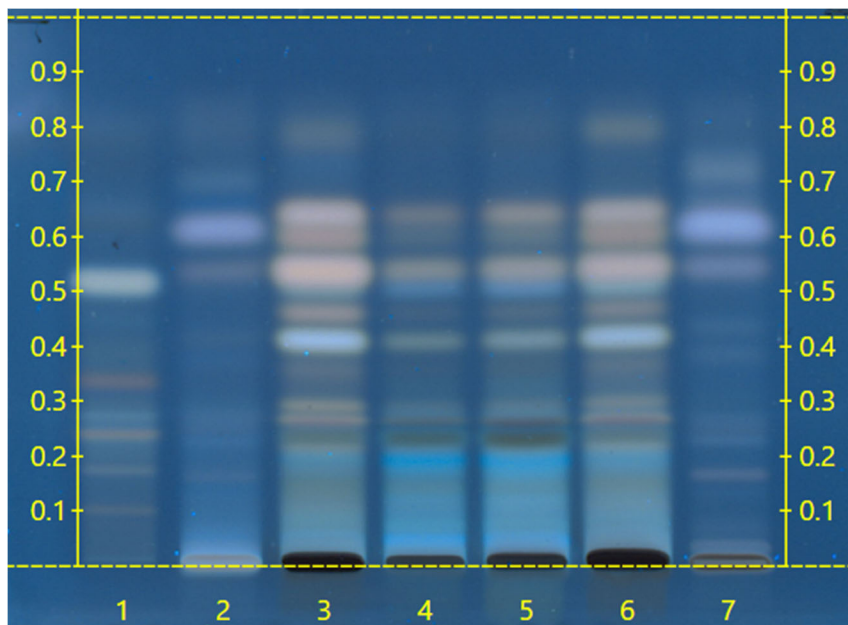


This sample conforms to *Inonotus obliquus*, Sterile Conk, Canker



Test Details

High Performance Thin-Layer Chromatography



Lanes 4 & 5 show the sample being tested.

Lane 6 shows the reference material used to compare with the sample.

We tested the sample against known authenticated reference materials to affirm identity, when applicable.

We tested the sample against different parts of the same plant when possible and as needed.

We tested this sample against known adulterants when applicable.

