



## Material Tested

Reishi

For: Lost Empire Herbs

Lot #: BREIS03APR23

Botanical: *Ganoderma lucidum* s.l. (Curtis: Fr.) P. Karst.  
[Ganodermataceae], Fruiting Body

Sample ID: 23121GDE\_1, Plate #: 199877

## What We've Tested

We tested this sample by High Performance Thin Layer Chromatography. HPTLC is a technique for separating phytochemical compounds within plant material, as well as other chemical compounds, to verify its identity and/or purity.



## Conclusion



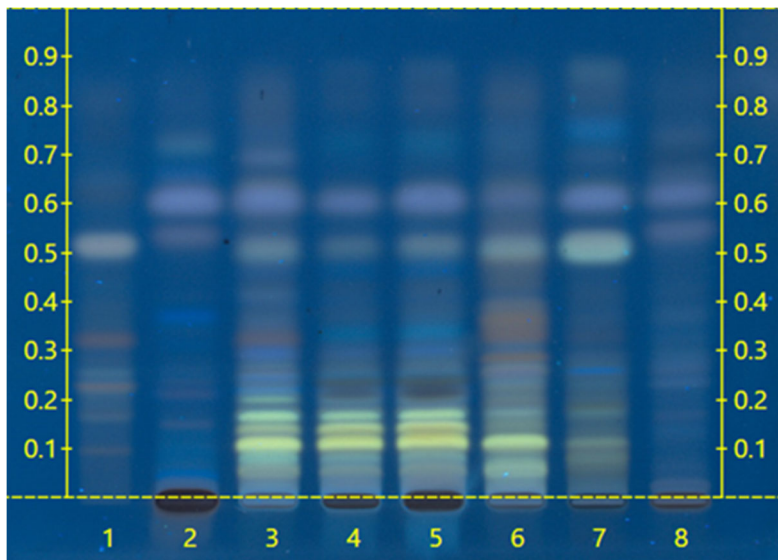
This sample conforms to *Ganoderma lucidum* s.l., Fruiting Body

We tested the sample against known authenticated reference materials to affirm identity, when applicable.



## Test Details

High Performance Thin-Layer Chromatography



We tested the sample against different parts of the same plant when possible and as needed.

We tested this sample against known adulterants when applicable.

Lanes 4 & 5 show the sample being tested.

Lane 3 shows the reference material used to compare with the sample.

