



Material Tested

Eleuthero

For: Lost Empire Herbs

Lot #: BEL27JUN22

Botanical: *Eleutherococcus senticosus* (Rupr. & Maxim.) Maxim.
[Araliaceae], root & stem

Sample ID: 22220XTB_1, Plate #: 181727

What We've Tested

We tested this sample by High Performance Thin Layer Chromatography. HPTLC is a technique for separating phytochemical compounds within plant material, as well as other chemical compounds, to verify its identity and/or purity.



Conclusion



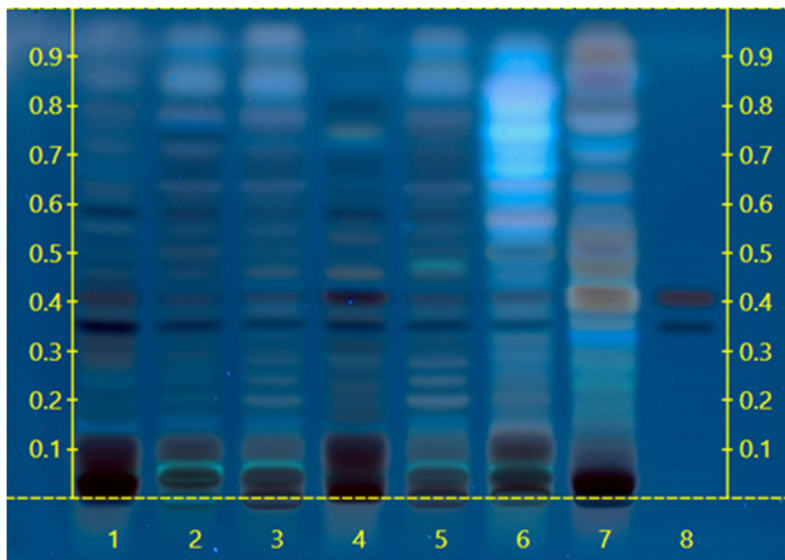
This sample conforms to *Eleutherococcus senticosus*, root & stem

We tested the sample against known authenticated reference materials to affirm identity, when applicable.



Test Details

High Performance Thin-Layer Chromatography



We tested the sample against different parts of the same plant when possible and as needed.

We tested this sample against known adulterants when applicable.

Lane 4 shows the sample being tested.

Lanes 1 & 2 show the reference material used to compare with the sample.

