



Material Tested

Chaga

For: Lost Empire Herbs

Lot #: BCHAG30JAN24

Botanical: *Inonotus obliquus* (Pers.: Fr.) Pilat [Hymenochaetaceae],
Fruiting Body

Sample ID: 24052PKF_1, Plate #: 222326

What We've Tested

We tested this sample by High Performance Thin Layer Chromatography. HPTLC is a technique for separating phytochemical compounds within plant material, as well as other chemical compounds, to verify its identity and/or purity.



Conclusion



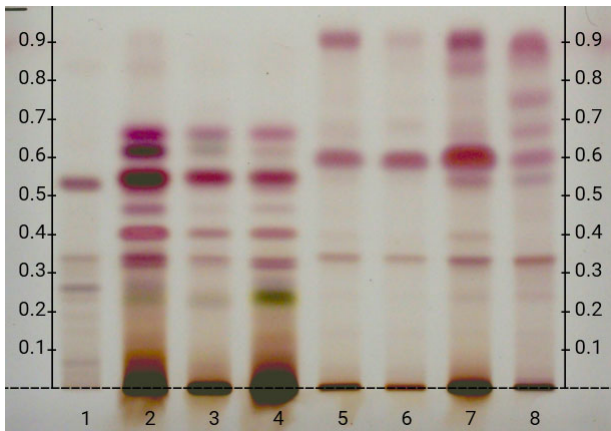
Inonotus obliquus, Fruiting Body, is present

We tested the sample against known authenticated reference materials to affirm identity, when applicable.



Test Details

High Performance Thin-Layer Chromatography



We tested the sample against different parts of the same plant when possible and as needed.

We tested this sample against known adulterants when applicable.

Lane 4 shows the sample being tested.

Lanes 2 & 3 show the reference material used to compare with the sample.

